

Hampshire Water Transfer and Water Recycling Project Environmental Statement - Figure 12.1 Land use and agriculture study area

VOLUME NUMBER: 6

PLANNING INSPECTORATE SCHEME NUMBER: WA010002

APPLICATION DOCUMENT REFERENCE: 6.3

APFP REGULATION: 5(2)(a)

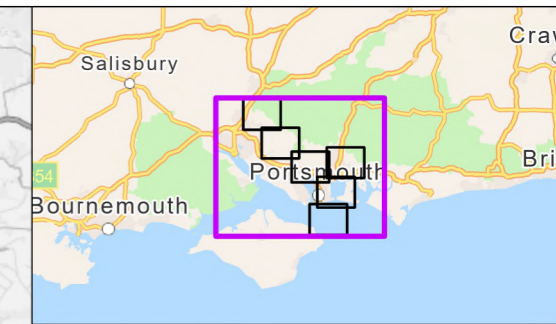
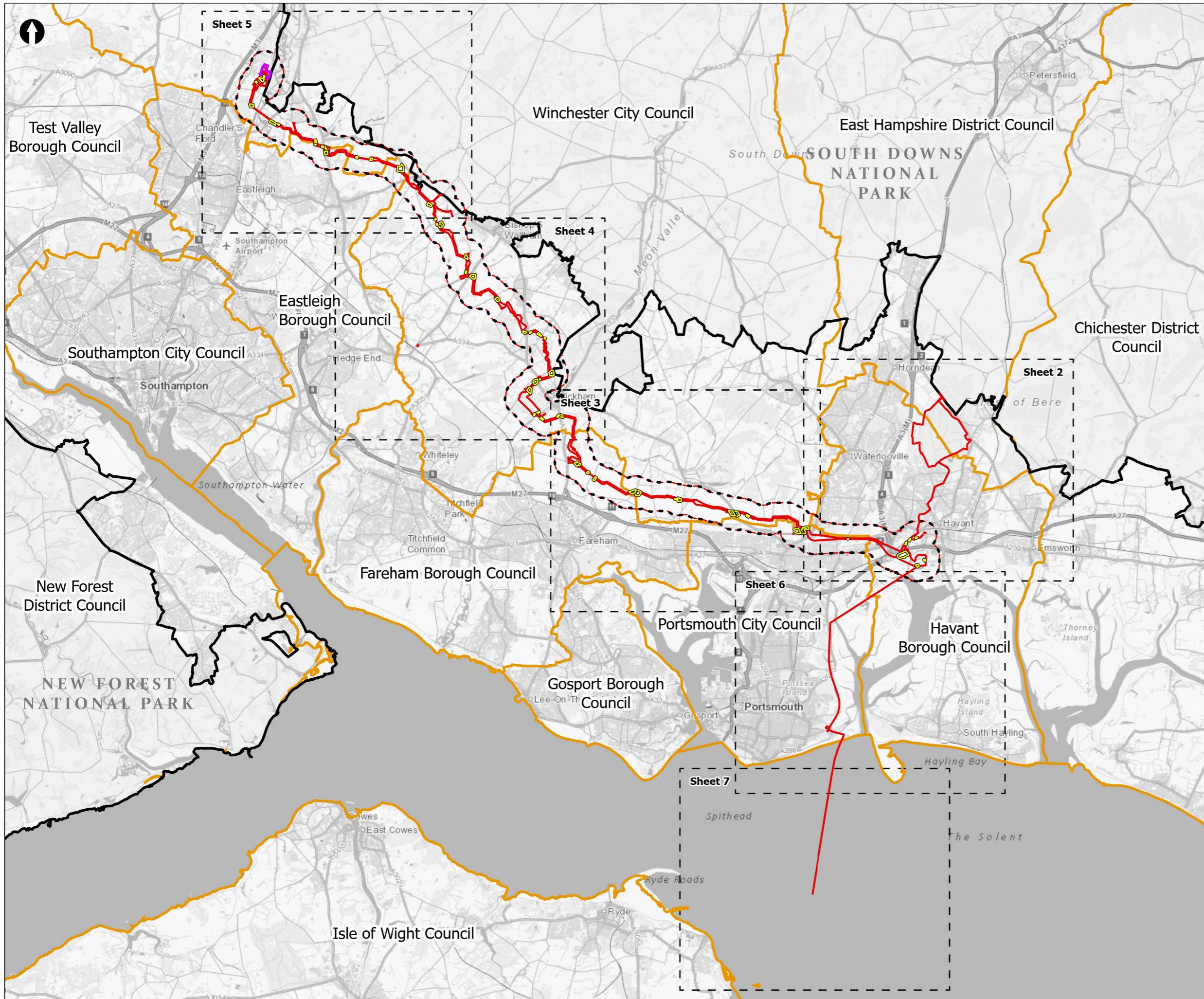
May 2026

Version 0



from
**Southern
Water** 

The Southern Water logo consists of the words 'Southern' and 'Water' stacked vertically in a dark blue, sans-serif font. To the right of the word 'Water' is a graphic element consisting of three stylized, wavy lines in shades of blue, representing water.



- Order Limits
- Land use and agriculture study area (500m buffer)
- Sheet Extent Boxes 1:30K
- National Parks
- Local planning authorities
- Otterbourne Water Supply Works
- Construction compounds

Coordinate system: British National Grid; Datum: OSGB 1936
 Data sources: © Crown copyright and database rights 2026 Ordnance Survey 0100031673. Contains OS data © Crown Copyright and database right 2020. Sources: Esri, TomTom, Garmin, FAO, NOAA, USGS, © OpenStreetMap contributors, and the GIS User Community

PROJECT TITLE
 Hampshire Water Transfer and Water Recycling Project

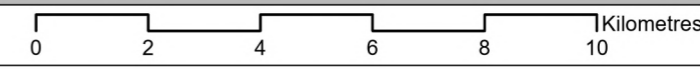


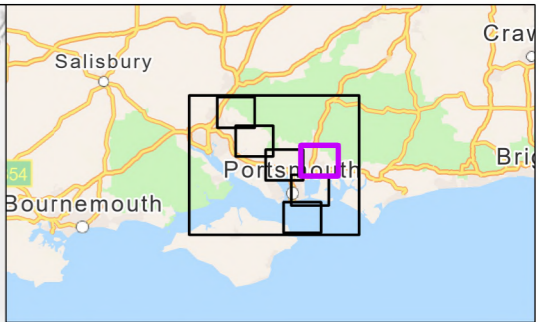
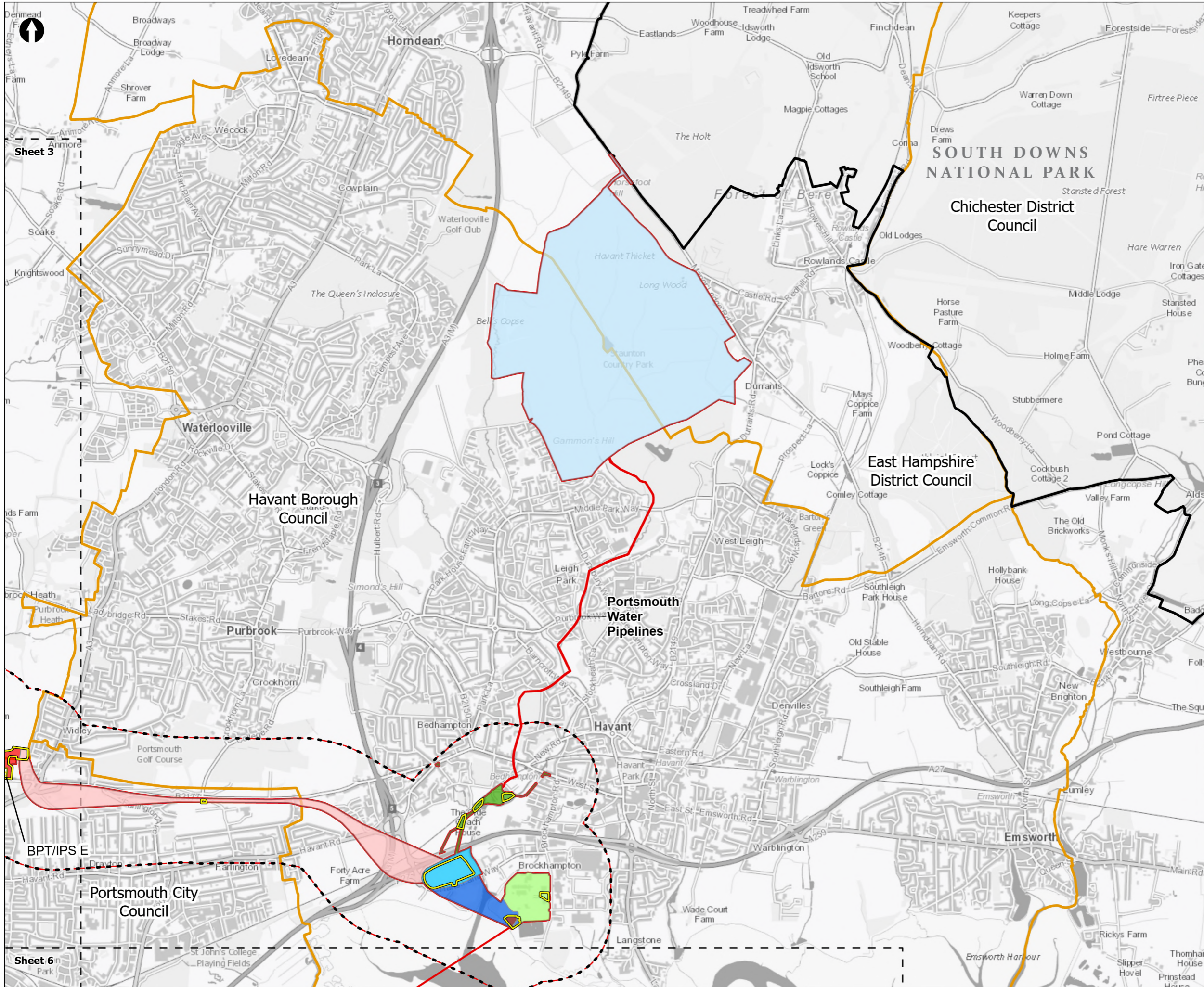
Figure 12.1
 Land use and agriculture study area
 Sheet 1 of 7

| | | | |
|---------------------------------|--------------------------|-----------------------|------------------------|
| Drawn DL | GIS Checked MW | Checked MP | Approved AK |
| Scale at A3 1:135,000 | Status Final | Revision 05 | Security STD |

Drawing Number
PC5223-RHD-ES-ZZ-D-Z-0001

© Southern Water 2026
 This document is issued for the party which commissioned it and for specific purposes connected with the captioned project only. It should not be relied upon by any other party or used for any other purpose.
 We accept no responsibility for the consequences of this document being relied upon by any other party, or being used for any other purpose, or containing any error or omission which is due to an error or omission in data supplied to us by other parties.





- Order Limits
- Land use and agriculture study area (500m buffer)
- Sheet Extent Boxes 1:30K
- National Parks
- Local planning authorities
- Proposed Development Components**
- Budds Farm Wastewater Treatment Works Pumping Station
- Limits of Deviation for Budds Farm Pumping Station
- Pipelines between the Water Recycling Plant site and Bedhampton Springs
- Water Recycling Plant site
- Pipelines between Budds Farm Wastewater Treatment Works and the Water Recycling Plant site
- Havant Thicket Reservoir
- Construction compounds
- Pipeline between the Water Recycling Plant site and Other Water Supply Works**
- Section D: The Water Recycling Plant site to Portsdown Hill
- Section E: Portsdown Hill to Boarhunt
- Above Ground Plant**
- Break Pressure Tank & Intermediate Pumping Station

Coordinate system: British National Grid; Datum: OSGB 1936
 Data sources: © Crown copyright and database rights 2026 Ordnance Survey 0100031673. Contains OS data © Crown Copyright and database right 2020, Sources: Esri, TomTom, Garmin, FAO, NOAA, USGS, © OpenStreetMap contributors, and the GIS User Community

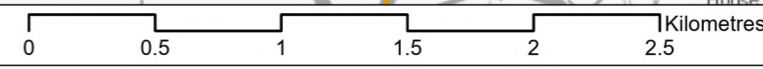
PROJECT TITLE
 Hampshire Water Transfer and Water Recycling Project

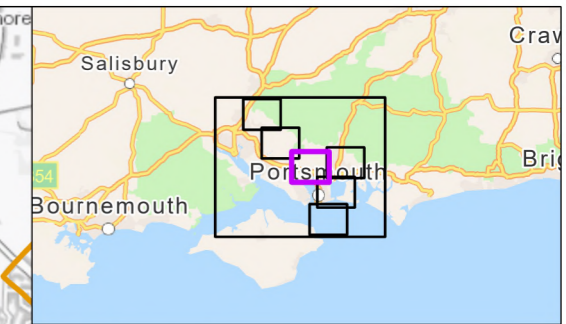
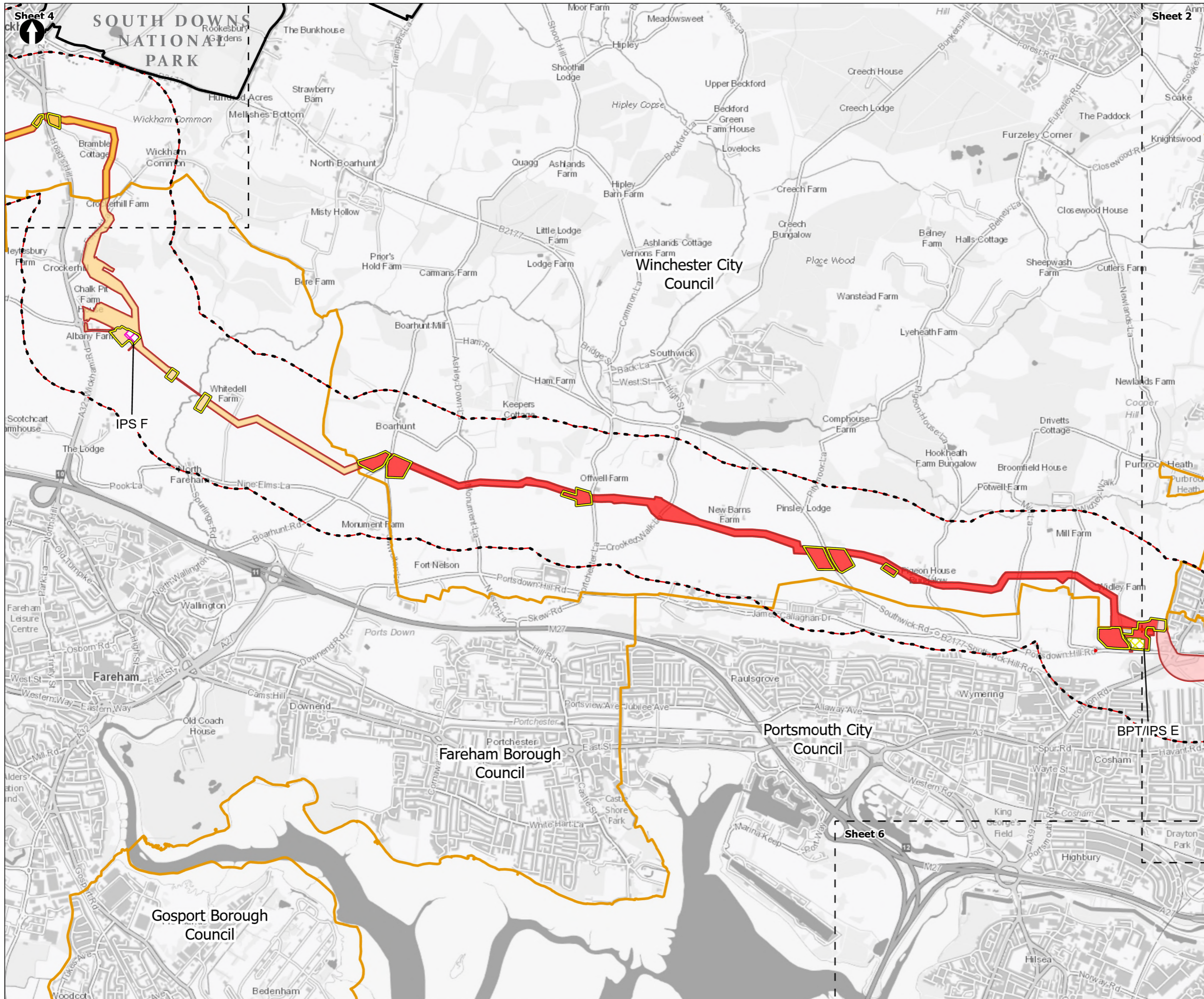


Figure 12.1
 Land use and agriculture study area
 Sheet 2 of 7

| | | | |
|-------------------------|-------------------|----------------|-----------------|
| Drawn DL | GIS Checked MW | Checked MP | Approved AK |
| Scale at A3 1:30,000 | Status Final | Revision 05 | Security STD |

Drawing Number
 PC5223-RHD-ES-ZZ-D-Z-0001





Order Limits

Land use and agriculture study area (500m buffer)

Sheet Extent Boxes 1:30K

National Parks

Local planning authorities

Construction compounds

Pipeline between the Water Recycling Plant site and Otterbourne Water Supply Works

- Section D: The Water Recycling Plant site to Portsdown Hill
- Section E: Portsdown Hill to Boarhunt
- Section F: Boarhunt to Crockerhill
- Section G: Crockerhill to Wickham

Above Ground Plant

- Break Pressure Tank & Intermediate Pumping Station
- Intermediate Pumping Station

Coordinate system: British National Grid; Datum: OSGB 1936
 Data sources: © Crown copyright and database rights 2026 Ordnance Survey 0100031673. Contains OS data © Crown Copyright and database right 2020. Sources: Esri, TomTom, Garmin, FAO, NOAA, USGS, © OpenStreetMap contributors, and the GIS User Community

PROJECT TITLE
 Hampshire Water Transfer and Water Recycling Project

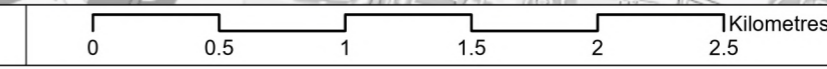


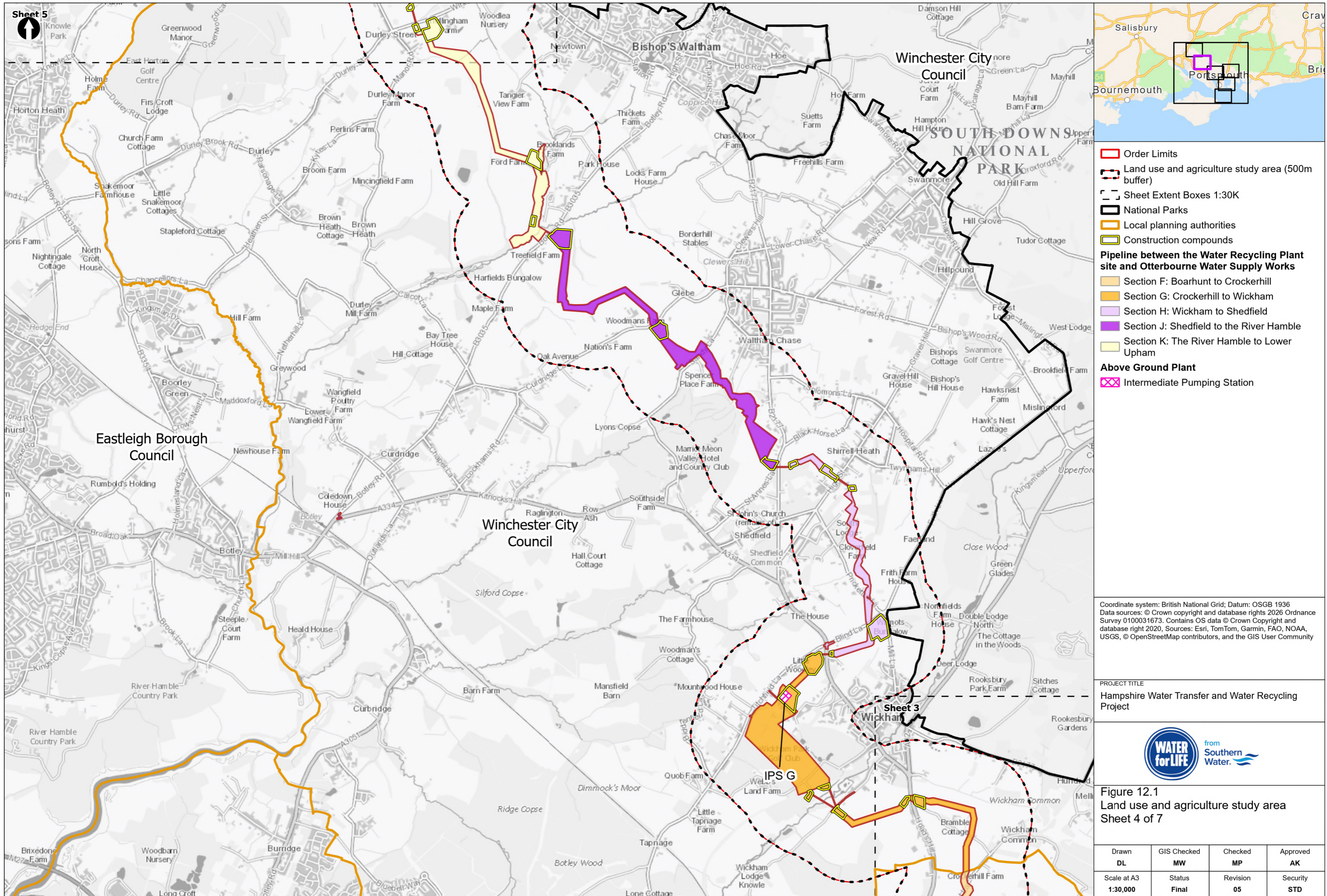
Figure 12.1
 Land use and agriculture study area
 Sheet 3 of 7

| | | | |
|--------------------------------|--------------------------|-----------------------|------------------------|
| Drawn DL | GIS Checked MW | Checked MP | Approved AK |
| Scale at A3 1:30,000 | Status Final | Revision 05 | Security STD |

Drawing Number
PC5223-RHD-ES-ZZ-D-Z-0001

© Southern Water 2026
 This document is issued for the party which commissioned it and for specific purposes connected with the captioned project only. It should not be relied upon by any other party or used for any other purpose. We accept no responsibility for the consequences of this document being relied upon by any other party, or being used for any other purpose, or containing any error or omission which is due to an error or omission in data supplied to us by other parties.





- Order Limits
- Land use and agriculture study area (500m buffer)
- Sheet Extent Boxes 1:30K
- National Parks
- Local planning authorities
- Construction compounds
- Pipeline between the Water Recycling Plant site and Otterbourne Water Supply Works**
- Section F: Boarhunt to Crockerhill
- Section G: Crockerhill to Wickham
- Section H: Wickham to Shedfield
- Section J: Shedfield to the River Hamble
- Section K: The River Hamble to Lower Upham
- Above Ground Plant**
- Intermediate Pumping Station

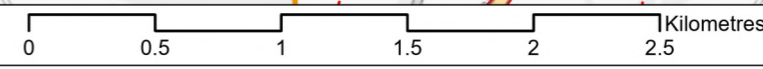
Coordinate system: British National Grid; Datum: OSGB 1936
 Data sources: © Crown copyright and database rights 2026 Ordnance Survey 0100031673. Contains OS data © Crown Copyright and database right 2020, Sources: Esri, TomTom, Garmin, FAO, NOAA, USGS, © OpenStreetMap contributors, and the GIS User Community

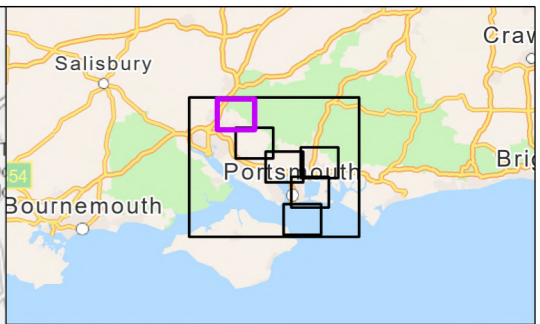
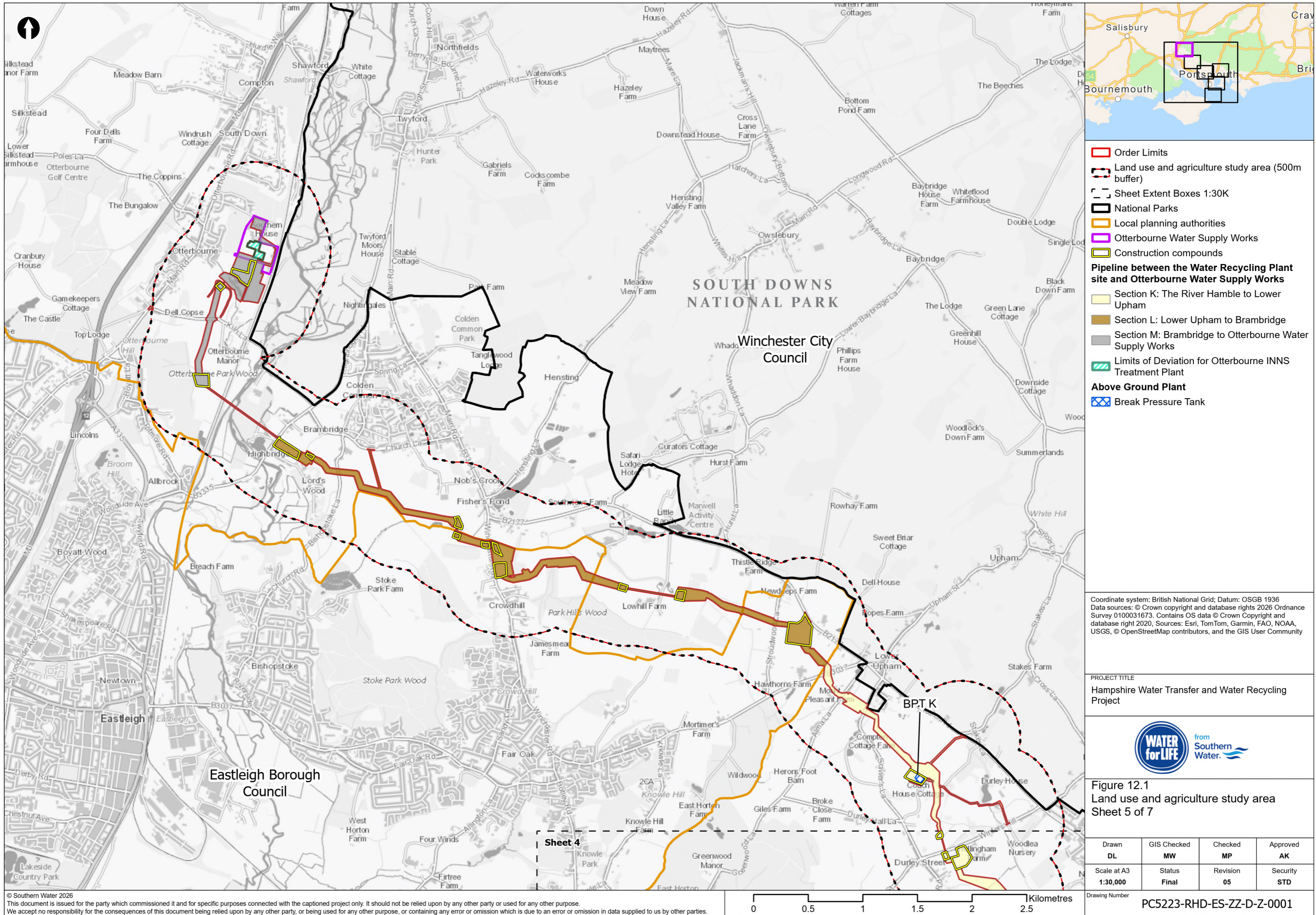
PROJECT TITLE
 Hampshire Water Transfer and Water Recycling Project



Figure 12.1
 Land use and agriculture study area
 Sheet 4 of 7

| | | | |
|--------------------------------|--------------------------|-----------------------|------------------------|
| Drawn DL | GIS Checked MW | Checked MP | Approved AK |
| Scale at A3 1:30,000 | Status Final | Revision 05 | Security STD |





- Order Limits
 - Land use and agriculture study area (500m buffer)
 - Sheet Extent Boxes 1:30K
 - National Parks
 - Local planning authorities
 - Otterbourne Water Supply Works
 - Construction compounds
- Pipeline between the Water Recycling Plant site and Otterbourne Water Supply Works**
- Section K: The River Hamble to Lower Upham
 - Section L: Lower Upham to Brambridge
 - Section M: Brambridge to Otterbourne Water Supply Works
 - Limits of Deviation for Otterbourne INNS Treatment Plant
- Above Ground Plant**
- Break Pressure Tank

Coordinate system: British National Grid; Datum: OSGB 1936
 Data sources: © Crown copyright and database rights 2026 Ordnance Survey 0100031673. Contains OS data © Crown Copyright and database right 2020, Sources: Esri, TomTom, Garmin, FAO, NOAA, USGS, © OpenStreetMap contributors, and the GIS User Community

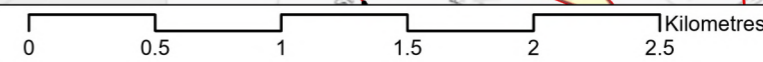
PROJECT TITLE
 Hampshire Water Transfer and Water Recycling Project



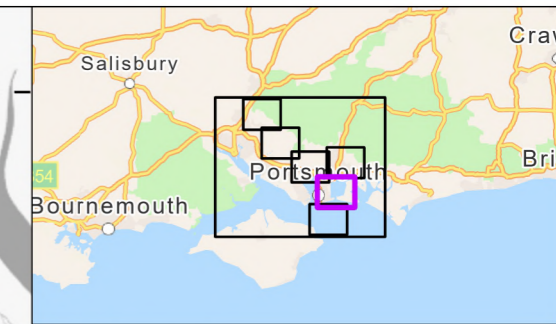
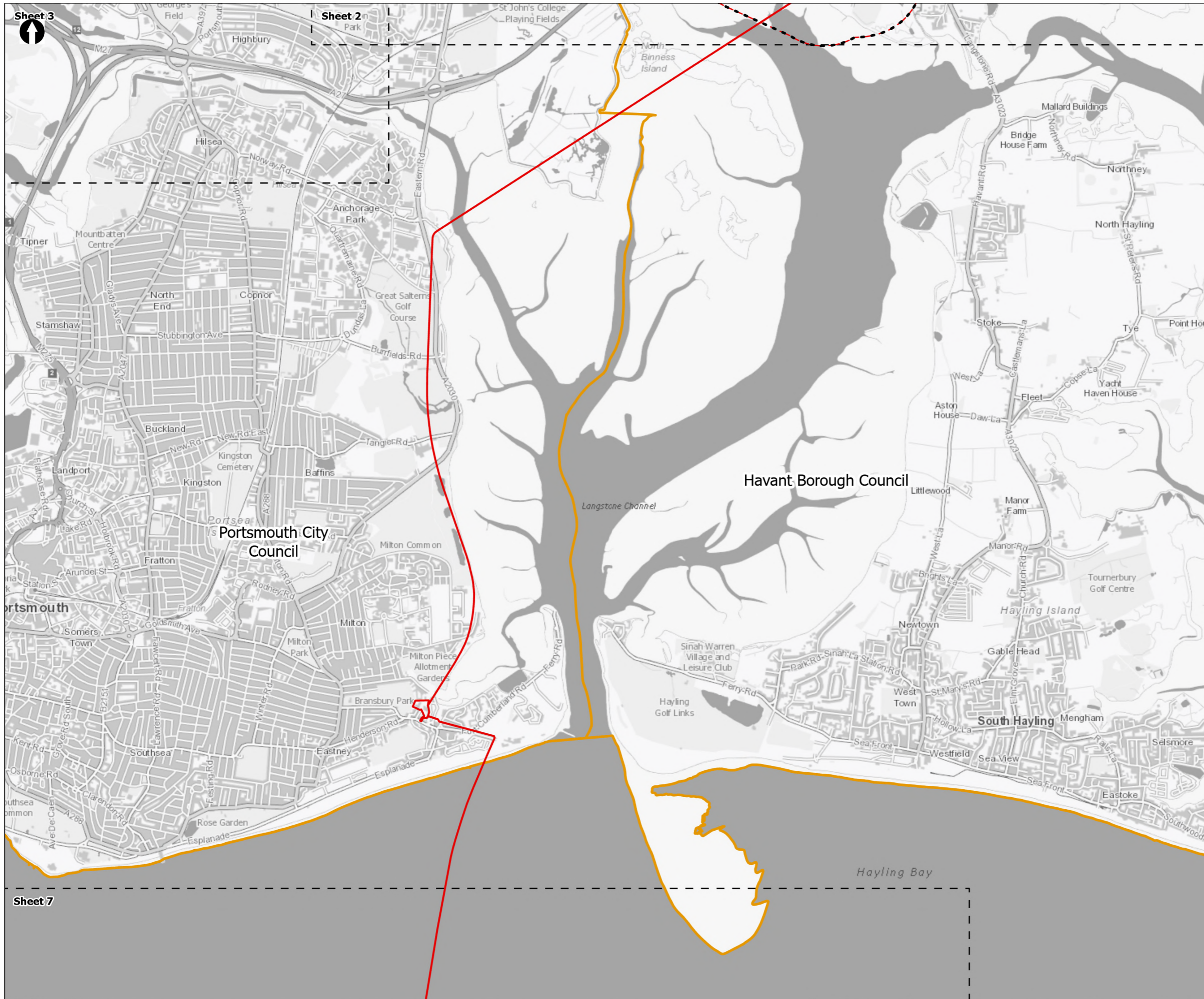
Figure 12.1
 Land use and agriculture study area
 Sheet 5 of 7

| | | | |
|--------------------------------|--------------------------|-----------------------|------------------------|
| Drawn DL | GIS Checked MW | Checked MP | Approved AK |
| Scale at A3 1:30,000 | Status Final | Revision 05 | Security STD |

Drawing Number
PC5223-RHD-ES-ZZ-D-Z-0001



Sheet 4



Legend

- Order Limits
- Land use and agriculture study area (500m buffer)
- Sheet Extent Boxes 1:30K
- Local planning authorities

Coordinate system: British National Grid; Datum: OSGB 1936
 Data sources: © Crown copyright and database rights 2026 Ordnance Survey 0100031673. Contains OS data © Crown Copyright and database right 2020. Sources: Esri, TomTom, Garmin, FAO, NOAA, USGS, © OpenStreetMap contributors, and the GIS User Community

PROJECT TITLE
 Hampshire Water Transfer and Water Recycling Project

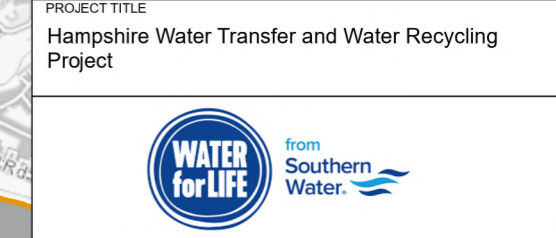
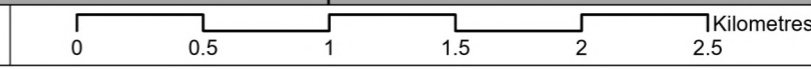


Figure 12.1
 Land use and agriculture study area
 Sheet 6 of 7

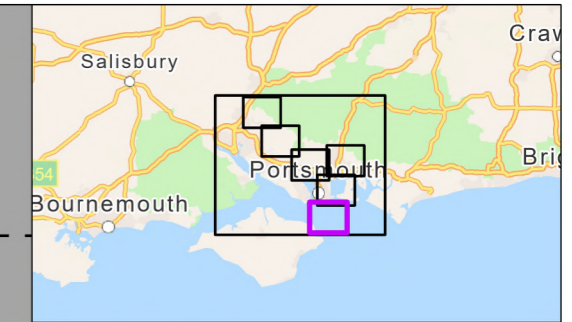
| | | | |
|--------------------------------|--------------------------|-----------------------|------------------------|
| Drawn DL | GIS Checked MW | Checked MP | Approved AK |
| Scale at A3 1:30,000 | Status Final | Revision 05 | Security STD |


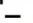

Drawing Number
PC5223-RHD-ES-ZZ-D-Z-0001





Sheet 6



 Order Limits
 Sheet Extent Boxes 1:30K
 Local planning authorities

Spithead



Coordinate system: British National Grid; Datum: OSGB 1936
 Data sources: © Crown copyright and database rights 2026 Ordnance Survey 0100031673. Contains OS data © Crown Copyright and database right 2020, Sources: Esri, TomTom, Garmin, FAO, NOAA, USGS, © OpenStreetMap contributors, and the GIS User Community

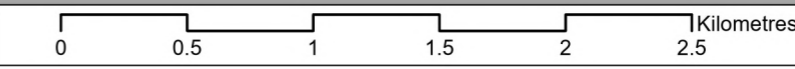
PROJECT TITLE
 Hampshire Water Transfer and Water Recycling Project



Figure 12.1
 Land use and agriculture study area
 Sheet 7 of 7

| | | | |
|--------------------------------|--------------------------|-----------------------|------------------------|
| Drawn DL | GIS Checked MW | Checked MP | Approved AK |
| Scale at A3 1:30,000 | Status Final | Revision 05 | Security STD |

© Southern Water 2026
 This document is issued for the party which commissioned it and for specific purposes connected with the captioned project only. It should not be relied upon by any other party or used for any other purpose.
 We accept no responsibility for the consequences of this document being relied upon by any other party, or being used for any other purpose, or containing any error or omission which is due to an error or omission in data supplied to us by other parties.



Drawing Number
PC5223-RHD-ES-ZZ-D-Z-0001